

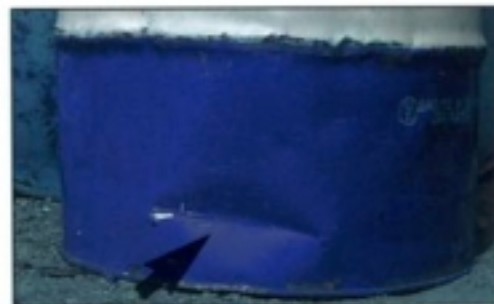
Severe pitting or corrosion that does not rub off with a gloved hand is not eligible (light surface rust is eligible).



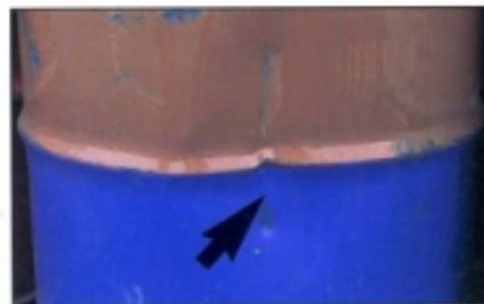
No bulged heads or bottoms extending beyond chimes.



Deep dents in excess of 5 cm (2 in.) are ineligible.



Sharp creases and dents are ineligible.



Dents occurring over the rolling rings are ineligible.



Dented, creased, or flattened rolling rings are ineligible.



Bent, creased, or folded chimes are ineligible (slightly out-of-round chimes are eligible).

